

# BGL®

## TUERCAS HIDRÁULICAS HMV\_E / HMVC\_E

HERRAMIENTA PARA MONTAJE Y DESMONTAJE DE  
MANGUITOS Y RODAMIENTOS DE AGUJERO CÓNIC



FABRICADAS EN BRASIL

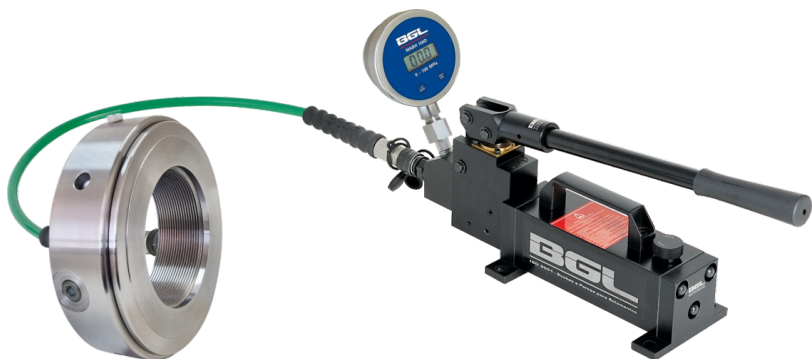
DESDE 1957 | ISO 9001



La Tuerca Hidráulica es una herramienta que asiste en el montaje y desmontaje de rodamientos sobre manguitos de agujero cónico o directamente sobre ejes.

Facilita el trabajo permitiendo un montaje sin impactos, lo que contribuye a prolongar la vida útil del conjunto ensamblado. Utiliza una Bomba Hidráulica manual para realizar el esfuerzo, reduciendo significativamente el tiempo de montaje y desmontaje en comparación con los métodos tradicionales que utilizan llave y martillo.

Fabricada en acero SAE 1045 y compuesta por un cuerpo rosqueado (con alojamiento para un reloj comparador y tornillo de nylon M6 para fijación), pistón, tapón, arandela, juego de anillos oring y niple de conexión 729832 A.



### INCLUYE

- Juego de Orings: **ORING** (repuesto)
- Llave de Pin: **CPR** (1 llave hasta HMV 43E y 2 llaves para tamaños superiores)
- Tapón de Sellado: **BUJAO 1/4" BSP**
- Tornillo de Nylon: **PARAF M6x\_N**
- Niple para HMVE: **729832 A**
- Manual de Instrucciones

### NO INCLUYE (opcional para compra individual)

- Reloj Comparador: **RCA**  
(Reloj Comparador Analógico con Barras Prolongadoras)
- Reloj Comparador: **RCD**  
(Reloj Comparador Digital con Barras Prolongadoras)

**Nota:** Aceite hidráulico recomendado: **68 HPL**

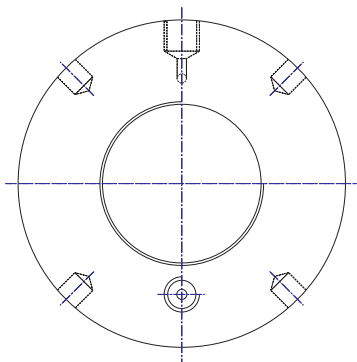
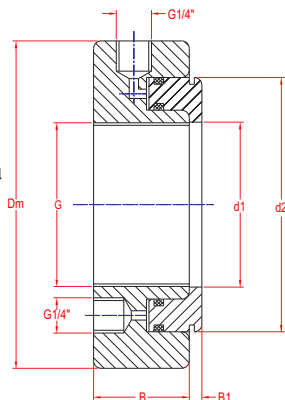
### VENTAJAS Y APLICACIONES

- Reducción de hasta 10 veces en el tiempo de montaje y desmontaje de rodamientos y Manguitos.
- Disminución de costos en el montaje y desmontaje de rodamientos y accesorios.
- Un proceso de montaje y desmontaje rápido, preciso, seguro, limpio y sin esfuerzo.



# ESPECIFICACIONES TÉCNICAS

- G** Medida de la Rosca
- d1** Diámetro Interno del Émbolo
- d2** Diámetro de la Brida Mayor del Émbolo
- Dm** Diámetro Externo
- B** Espesor
- B1** Espesor de la Brida + Rebaje



| CÓDIGO      | MEDIDAS TUERCA HIDRÁULICA HMV_E |         |         |         |        |         | PRESIÓN MÁXIMA CONSIDERANDO EL DESPLAZAMIENTO DEL ÉMBOLO |               |                    |               | BOMBA HIDRÁULICA RECOMENDADA |
|-------------|---------------------------------|---------|---------|---------|--------|---------|--|---------------|--------------------|---------------|------------------------------|
|             | G (mm)                          | d1 (mm) | D2 (mm) | Dm (mm) | B (mm) | B1 (mm) | Desplaz. (mm)  | Presión (MPa) | Desplaz. Máx. (mm) | Presión (MPa) |                              |
| HMV 10E     | M50x1.5                         | 50.5    | 104     | 114     | 38     | 4       | 2.5  | 80            | 5                  | 70            |                              |
| HMV 11E     | M55x2                           | 55.5    | 109     | 120     | 38     | 4       | 2.5  | 80            | 5                  | 70            |                              |
| HMV 11x1.5E | M55x1.5                         | 55.5    | 109     | 120     | 38     | 4       | 2.5  | 80            | 5                  | 70            |                              |
| HMV 12E     | M60x2                           | 60.5    | 115     | 125     | 38     | 5       | 2.5  | 80            | 5                  | 70            |                              |
| HMV 12x1.5E | M60x1.5                         | 60.5    | 115     | 125     | 38     | 5       | 2.5  | 80            | 5                  | 70            |                              |
| HMV 13E     | M65x2                           | 65.5    | 121     | 130     | 38     | 5       | 2.5  | 80            | 5                  | 70            |                              |
| HMV 13x1.5E | M65x1.5                         | 65.5    | 121     | 130     | 38     | 5       | 2.5  | 80            | 5                  | 70            |                              |
| HMV 14E     | M70x2                           | 70.5    | 127     | 135     | 38     | 5       | 2.5  | 80            | 5                  | 70            |                              |
| HMV 15E     | M75x2                           | 75.5    | 132     | 140     | 38     | 5       | 2.5  | 80            | 5                  | 70            |                              |
| HMV 16E     | M80x2                           | 80.5    | 137     | 146     | 38     | 5       | 2.5  | 80            | 5                  | 70            |                              |
| HMV 17E     | M85x2                           | 85.5    | 142     | 150     | 38     | 5       | 2.5  | 80            | 5                  | 70            |                              |
| HMV 18E     | M90x2                           | 90.5    | 147     | 156     | 38     | 5       | 2.5  | 80            | 5                  | 70            |                              |
| HMV 19E     | M95x2                           | 95.5    | 153     | 162     | 38     | 5       | 2.5  | 80            | 5                  | 70            |                              |
| HMV 20E     | M100x2                          | 100.5   | 158     | 166     | 38     | 6       | 2.5  | 80            | 5                  | 70            |                              |
| HMV 21E     | M105x2                          | 105.5   | 163     | 172     | 38     | 6       | 2.5  | 80            | 5                  | 70            |                              |
| HMV 22E     | M110x2                          | 110.5   | 169     | 178     | 38     | 6       | 2.5  | 80            | 5                  | 70            |                              |
| HMV 23E     | M115x2                          | 115.5   | 174     | 182     | 38     | 6       | 2.5  | 80            | 5                  | 70            |                              |
| HMV 24E     | M120x2                          | 120.5   | 179     | 188     | 38     | 6       | 2.5  | 80            | 5                  | 70            |                              |
| HMV 25E     | M125x2                          | 125.5   | 184     | 192     | 38     | 6       | 2.5  | 80            | 5                  | 70            |                              |
| HMV 26E     | M130x2                          | 130.5   | 190     | 198     | 38     | 6       | 2.5  | 80            | 5                  | 70            |                              |
| HMV 27E     | M135x2                          | 135.5   | 195     | 204     | 38     | 6       | 2.5  | 80            | 5                  | 70            |                              |
| HMV 28E     | M140x2                          | 140.5   | 200     | 208     | 38     | 7       | 2.5  | 80            | 5                  | 70            |                              |
| HMV 29E     | M145x2                          | 145.5   | 206     | 214     | 39     | 7       | 2.5  | 80            | 5                  | 70            |                              |
| HMV 30E     | M150x2                          | 150.5   | 211     | 220     | 39     | 7       | 2.5  | 80            | 5                  | 70            |                              |
| HMV 31E     | M155x3                          | 155.5   | 218     | 226     | 39     | 7       | 2.5  | 80            | 5                  | 70            |                              |
| HMV 32E     | M160x3                          | 160.5   | 224     | 232     | 40     | 7       | 3.0  | 80            | 6                  | 70            |                              |
| HMV 33E     | M165x3                          | 165.5   | 229     | 238     | 40     | 7       | 3.0  | 80            | 6                  | 70            |                              |
| HMV 34E     | M170x3                          | 170.5   | 235     | 244     | 41     | 7       | 3.0  | 80            | 6                  | 70            |                              |
| HMV 36E     | M180x3                          | 180.5   | 247     | 256     | 41     | 7       | 3.0  | 75            | 6                  | 50            |                              |
| HMV 38E     | M190x3                          | 191.0   | 259     | 270     | 42     | 8       | 3.5  | 75            | 7                  | 50            |                              |
| HMV 40E     | M200x3                          | 201.0   | 271     | 282     | 43     | 8       | 4.0  | 75            | 8                  | 50            |                              |
| HMV 41E     | Tr205x4                         | 207.0   | 276     | 288     | 43     | 8       | 4.0  | 75            | 8                  | 50            |                              |
| HMV 42E     | Tr210x4                         | 212.0   | 282     | 294     | 43     | 8       | 4.5  | 75            | 9                  | 50            |                              |
| HMV 43E     | Tr215x4                         | 217.0   | 287     | 300     | 43     | 8       | 4.5  | 75            | 9                  | 50            |                              |
| HMV 44E     | Tr220x4                         | 222.0   | 293     | 306     | 43     | 8       | 4.5  | 75            | 9                  | 50            |                              |
| HMV 45E     | Tr225x4                         | 227.0   | 300     | 312     | 45     | 8       | 4.5  | 75            | 9                  | 50            |                              |
| HMV 46E     | Tr230x4                         | 232.0   | 305     | 318     | 45     | 8       | 4.5  | 75            | 9                  | 50            |                              |
| HMV 47E     | Tr235x4                         | 237.0   | 311     | 326     | 46     | 8       | 5.0  | 75            | 10                 | 50            |                              |

Manómetro Analógico | BH 100-0.7 / BH 160 / BH 160-4.8  
 Manómetro Digital | BH 100-0.7D / BH 160D / BH 160-4.8D

| CÓDIGO   | MEDIDAS TUERCA HIDRÁULICA HMV_E |         |         |         |        |         | PRESIÓN MÁXIMA CONSIDERANDO EL DESPLAZAMIENTO DEL ÉMBOLO |               |                   |               |
|----------|---------------------------------|---------|---------|---------|--------|---------|--|---------------|-------------------|---------------|
|          | G (mm)                          | d1 (mm) | D2 (mm) | Dm (mm) | B (mm) | B1 (mm) | Desplaz. (mm)  | Presión (MPa) | Desplaz. Máx.(mm) | Presión (MPa) |
| HMV 48E  | Tr240x4                         | 242.0   | 316     | 330     | 46     | 9       | 5.0  | 75            | 10                | 50            |
| HMV 50E  | Tr250x4                         | 252.0   | 329     | 342     | 46     | 9       | 5.0  | 70            | 10                | 40            |
| HMV 52E  | Tr260x4                         | 262.0   | 341     | 356     | 47     | 9       | 5.5  | 70            | 11                | 40            |
| HMV 54E  | Tr270x4                         | 272.0   | 352     | 368     | 48     | 9       | 6.0  | 70            | 12                | 40            |
| HMV 56E  | Tr280x4                         | 282.0   | 363     | 380     | 49     | 9       | 6.0  | 70            | 12                | 40            |
| HMV 58E  | Tr290x4                         | 292.0   | 375     | 390     | 49     | 9       | 6.5  | 70            | 13                | 40            |
| HMV 60E  | Tr300x4                         | 302.0   | 386     | 404     | 50     | 10      | 7.0  | 70            | 14                | 40            |
| HMV 62E  | Tr310x5                         | 312.0   | 397     | 416     | 52     | 10      | 7.0  | 70            | 14                | 40            |
| HMV 64E  | Tr320x5                         | 322.0   | 409     | 428     | 53     | 10      | 7.0  | 70            | 14                | 40            |
| HMV 66E  | Tr330x5                         | 332.0   | 419     | 438     | 53     | 10      | 7.0  | 70            | 14                | 40            |
| HMV 68E  | Tr340x5                         | 342.0   | 430     | 450     | 54     | 10      | 7.0  | 70            | 14                | 40            |
| HMV 69E  | Tr345x5                         | 347.0   | 436     | 456     | 54     | 10      | 7.0  | 60            | 14                | 40            |
| HMV 70E  | Tr350x5                         | 352.0   | 442     | 464     | 56     | 10      | 7.0  | 60            | 14                | 40            |
| HMV 72E  | Tr360x5                         | 362.0   | 455     | 472     | 56     | 10      | 7.5  | 60            | 15                | 40            |
| HMV 73E  | Tr365x5                         | 367.0   | 460     | 482     | 56     | 11      | 7.5  | 60            | 15                | 40            |
| HMV 74E  | Tr370x5                         | 372.0   | 466     | 486     | 56     | 11      | 8.0  | 60            | 16                | 40            |
| HMV 76E  | Tr380x5                         | 382.0   | 476     | 498     | 58     | 11      | 8.0  | 60            | 16                | 40            |
| HMV 77E  | Tr385x5                         | 387.0   | 483     | 504     | 58     | 11      | 8.0  | 60            | 16                | 40            |
| HMV 80E  | Tr400x5                         | 402.0   | 499     | 522     | 60     | 11      | 8.0  | 60            | 17                | 40            |
| HMV 82E  | Tr410x5                         | 412.0   | 510     | 534     | 61     | 11      | 8.0  | 60            | 17                | 40            |
| HMV 84E  | Tr420x5                         | 422.0   | 522     | 546     | 61     | 11      | 8.0  | 60            | 17                | 40            |
| HMV 86E  | Tr430x5                         | 432.0   | 532     | 556     | 62     | 11      | 8.0  | 60            | 17                | 40            |
| HMV 88E  | Tr440x5                         | 442.0   | 543     | 566     | 62     | 12      | 8.0  | 60            | 17                | 40            |
| HMV 90E  | Tr450x5                         | 452.0   | 554     | 580     | 64     | 12      | 8.0  | 60            | 17                | 40            |
| HMV 92E  | Tr460x5                         | 462.0   | 565     | 590     | 64     | 12      | 8.0  | 60            | 17                | 40            |
| HMV 94E  | Tr470x5                         | 472.0   | 576     | 602     | 65     | 12      | 9.0  | 60            | 18                | 40            |
| HMV 96E  | Tr480x5                         | 482.0   | 587     | 612     | 65     | 12      | 9.0  | 60            | 19                | 40            |
| HMV 98E  | Tr490x5                         | 492.0   | 597     | 624     | 66     | 12      | 9.0  | 60            | 19                | 40            |
| HMV 100E | Tr500x5                         | 502.0   | 609     | 636     | 67     | 12      | 9.0  | 60            | 19                | 40            |
| HMV 102E | Tr510x6                         | 512.0   | 624     | 648     | 68     | 12      | 10.0   | 50            | 20                | 30            |
| HMV 104E | Tr520x6                         | 522.0   | 634     | 658     | 68     | 13      | 10.0   | 50            | 20                | 30            |
| HMV 106E | Tr530x6                         | 532.0   | 645     | 670     | 69     | 13      | 10.0   | 50            | 21                | 30            |
| HMV 108E | Tr540x6                         | 542.0   | 657     | 682     | 69     | 13      | 10.0   | 50            | 21                | 30            |
| HMV 110E | Tr550x6                         | 552.0   | 667     | 693     | 70     | 13      | 10.0   | 50            | 21                | 30            |
| HMV 112E | Tr560x6                         | 562.0   | 678     | 704     | 71     | 13      | 11.0   | 50            | 22                | 30            |
| HMV 114E | Tr570x6                         | 572.0   | 689     | 716     | 72     | 13      | 11.0   | 50            | 23                | 30            |
| HMV 116E | Tr580x6                         | 582.0   | 699     | 726     | 72     | 13      | 11.0   | 50            | 23                | 30            |
| HMV 118E | Tr590x6                         | 592.0   | 713     | 740     | 72     | 13      | 11.0   | 50            | 23                | 30            |
| HMV 120E | Tr600x6                         | 602.0   | 721     | 748     | 73     | 13      | 11.0   | 50            | 23                | 30            |
| HMV 125E | Tr625x6                         | 628.0   | 750     | 775     | 74     | 14      | 11.0   | 50            | 23                | 30            |
| HMV 126E | Tr630x6                         | 632.0   | 754     | 782     | 74     | 14      | 11.0   | 50            | 23                | 30            |
| HMV 130E | Tr650x6                         | 652.0   | 775     | 804     | 75     | 14      | 11.0   | 50            | 23                | 30            |
| HMV 134E | Tr670x6                         | 672.0   | 796     | 826     | 75     | 14      | 11.0   | 50            | 23                | 30            |
| HMV 138E | Tr690x6                         | 692.0   | 819     | 848     | 77     | 14      | 12.0   | 40            | 25                | 25            |
| HMV 142E | Tr710x7                         | 712.0   | 840     | 870     | 78     | 15      | 12.0   | 40            | 25                | 25            |
| HMV 150E | Tr750x7                         | 752.0   | 883     | 912     | 79     | 15      | 12.0   | 40            | 25                | 25            |
| HMV 155E | Tr775x7                         | 777.0   | 936     | 965     | 80     | 16      | 12.0   | 40            | 25                | 25            |
| HMV 160E | Tr800x7                         | 802.0   | 936     | 965     | 80     | 16      | 12.0   | 40            | 25                | 25            |
| HMV 170E | Tr850x7                         | 852.0   | 990     | 1020    | 83     | 16      | 13.0   | 40            | 26                | 25            |
| HMV 180E | Tr900x7                         | 902.0   | 1043    | 1075    | 86     | 17      | 15.0   | 40            | 30                | 25            |
| HMV 190E | Tr950x8                         | 952.0   | 1097    | 1126    | 86     | 17      | 15.0   | 40            | 30                | 25            |
| HMV 200E | Tr1000x8                        | 1002.0  | 1150    | 1180    | 88     | 17      | 15.0   | 40            | 34                | 25            |
| HMV 212E | Tr1060x8                        | 1063.0  | 1220    | 1255    | 97     | 18      | 15.0   | 30            | 36                | 20            |
| HMV 224E | Tr1120x8                        | 1123.0  | 1300    | 1340    | 106    | 19      | 16.0   | 25            | 40                | 18            |
| HMV 236E | Tr1180x8                        | 1183.0  | 1340    | 1430    | 113    | 22      | 16.0   | 25            | 43                | 17            |

Manómetro Analógico | BH 100-0.7 / BH 160 / BH 160-4.8  
Manómetro Digital | BH 100-0.7D / BH 160D / BH 160-4.8D

Manómetro Analógico  
BH 160-4.8  
Manómetro Digital  
BH 160-4.8D

| CÓDIGO    | MEDIDAS TUERCA HIDRÁULICA HMVC_E |         |         |         |        |         | PRESIÓN MÁXIMA CONSIDERANDO EL DESPLAZAMIENTO DEL ÉMBOLO |               |                   |               | BOMBA HIDRÁULICA RECOMENDADA  |
|-----------|----------------------------------|---------|---------|---------|--------|---------|--|---------------|-------------------|---------------|---|
|           | G (pol.)                         | d1 (mm) | D2 (mm) | Dm (mm) | B (mm) | B1 (mm) | Desplaz. (mm)  | Presión (MPa) | Desplaz. Máx.(mm) | Presión (MPa) |   |
| HMVC 10E  | 1.967"x18F                       | 50.5    | 104     | 114     | 38     | 4       | 2.5  | 80            | 5                 | 70            | Manómetro Analógico   BH 100-0.7 / BH 160 / BH 160-4.8<br>Manómetro Digital   BH 100-0.7D / BH 160D / BH 160-4.8D |
| HMVC 11E  | 2.157"x18F                       | 55.5    | 109     | 120     | 38     | 4       | 2.5  | 80            | 5                 | 70            |   |
| HMVC 12E  | 2.360"x18F                       | 60.5    | 115     | 125     | 38     | 5       | 2.5  | 80            | 5                 | 70            |   |
| HMVC 13E  | 2.548"x18F                       | 65.5    | 121     | 130     | 38     | 5       | 2.5  | 80            | 5                 | 70            |   |
| HMVC 14E  | 2.751"x18F                       | 70.5    | 127     | 135     | 38     | 5       | 2.5  | 80            | 5                 | 70            |   |
| HMVC 15E  | 2.933"x12F                       | 75.5    | 132     | 140     | 38     | 5       | 2.5  | 80            | 5                 | 70            |   |
| HMVC 16E  | 3.137"x12F                       | 80.5    | 137     | 146     | 38     | 5       | 2.5  | 80            | 5                 | 70            |   |
| HMVC 17E  | 3.340"x12F                       | 85.5    | 142     | 150     | 38     | 5       | 2.5  | 80            | 5                 | 70            |   |
| HMVC 18E  | 3.527"x12F                       | 90.5    | 147     | 156     | 38     | 5       | 2.5  | 80            | 5                 | 70            |   |
| HMVC 19E  | 3.730"x12F                       | 95.5    | 153     | 162     | 38     | 5       | 2.5  | 80            | 5                 | 70            |   |
| HMVC 20E  | 3.918"x12F                       | 100.5   | 158     | 166     | 38     | 6       | 2.5  | 80            | 5                 | 70            |   |
| HMVC 21E  | 4.122"x12F                       | 105.5   | 163     | 172     | 38     | 6       | 2.5  | 80            | 5                 | 70            |   |
| HMVC 22E  | 4.325"x12F                       | 110.5   | 169     | 178     | 38     | 6       | 2.5  | 80            | 5                 | 70            |   |
| HMVC 24E  | 4.716"x12F                       | 120.5   | 179     | 188     | 38     | 6       | 2.5  | 80            | 5                 | 70            |   |
| HMVC 26E  | 5.106"x12F                       | 130.5   | 190     | 198     | 38     | 6       | 2.5  | 80            | 5                 | 70            |   |
| HMVC 28E  | 5.497"x12F                       | 140.5   | 200     | 208     | 38     | 7       | 2.5  | 80            | 5                 | 70            |   |
| HMVC 30E  | 5.888"x12F                       | 150.5   | 211     | 220     | 39     | 7       | 2.5  | 80            | 5                 | 70            |   |
| HMVC 32E  | 6.284"x8F                        | 160.5   | 224     | 232     | 40     | 7       | 3.0  | 80            | 6                 | 70            |   |
| HMVC 34E  | 6.659"x8F                        | 170.5   | 235     | 244     | 41     | 7       | 3.0  | 80            | 6                 | 70            |   |
| HMVC 36E  | 7.066"x8F                        | 180.5   | 247     | 256     | 41     | 7       | 3.0  | 75            | 6                 | 50            |   |
| HMVC 38E  | 7.472"x8F                        | 191.0   | 259     | 270     | 42     | 8       | 3.5  | 75            | 7                 | 50            |   |
| HMVC 40E  | 7.847"x8F                        | 201.0   | 271     | 282     | 43     | 8       | 4.0  | 75            | 8                 | 50            |   |
| HMVC 44E  | 8.628"x8F                        | 222.0   | 293     | 306     | 43     | 8       | 4.5  | 75            | 9                 | 50            |   |
| HMVC 46E  | 9.125"x8F                        | 232.0   | 305     | 318     | 45     | 8       | 4.5  | 75            | 9                 | 50            |   |
| HMVC 48E  | 9.442"x6F                        | 242.0   | 316     | 330     | 46     | 9       | 5.0  | 75            | 10                | 50            |   |
| HMVC 52E  | 10.192"x6F                       | 262.0   | 341     | 356     | 47     | 9       | 5.5  | 70            | 11                | 40            |   |
| HMVC 54E  | 10.600"x6F                       | 272.0   | 352     | 368     | 48     | 9       | 6.0  | 70            | 12                | 40            |   |
| HMVC 56E  | 11.004"x6F                       | 282.0   | 363     | 380     | 49     | 9       | 6.0  | 70            | 12                | 40            |   |
| HMVC 60E  | 11.785"x6F                       | 302.0   | 386     | 404     | 50     | 10      | 7.0  | 70            | 14                | 40            |   |
| HMVC 64E  | 12.562"x6F                       | 322.0   | 409     | 428     | 53     | 10      | 7.0  | 70            | 14                | 40            |   |
| HMVC 66E  | 12.942"x6F                       | 332.0   | 419     | 438     | 53     | 10      | 7.0  | 70            | 14                | 40            |   |
| HMVC 68E  | 13.339"x5F                       | 342.0   | 430     | 450     | 54     | 10      | 7.0  | 70            | 14                | 40            |   |
| HMVC 72E  | 14.170"x5F                       | 362.0   | 455     | 472     | 56     | 10      | 7.5  | 60            | 15                | 40            |   |
| HMVC 76E  | 14.957"x5F                       | 382.0   | 476     | 498     | 58     | 11      | 8.0  | 60            | 16                | 40            |   |
| HMVC 80E  | 15.745"x5F                       | 402.0   | 499     | 522     | 60     | 11      | 8.0  | 60            | 17                | 40            |   |
| HMVC 84E  | 16.532"x5F                       | 422.0   | 522     | 546     | 61     | 11      | 8.0  | 60            | 17                | 40            |   |
| HMVC 88E  | 17.319"x5F                       | 442.0   | 543     | 566     | 62     | 12      | 8.0  | 60            | 17                | 40            |   |
| HMVC 92E  | 18.107"x5F                       | 462.0   | 565     | 590     | 64     | 12      | 8.0  | 60            | 17                | 40            |   |
| HMVC 96E  | 18.894"x5F                       | 482.0   | 587     | 612     | 65     | 12      | 9.0  | 60            | 19                | 40            |   |
| HMVC 100E | 19.682"x5F                       | 502.0   | 609     | 636     | 67     | 12      | 9.0  | 60            | 19                | 40            |   |
| HMVC 106E | 20.867"x4F                       | 532.0   | 645     | 670     | 69     | 13      | 10.0   | 50            | 21                | 30            |   |
| HMVC 112E | 22.048"x4F                       | 562.0   | 678     | 704     | 71     | 13      | 11.0   | 50            | 22                | 30            |   |
| HMVC 120E | 23.623"x4F                       | 602.0   | 721     | 748     | 73     | 13      | 11.0   | 50            | 23                | 30            |   |
| HMVC 126E | 24.804"x4F                       | 632.0   | 754     | 782     | 74     | 14      | 11.0   | 50            | 23                | 30            |   |
| HMVC 134E | 26.379"x4F                       | 672.0   | 796     | 826     | 75     | 15      | 11.0   | 50            | 23                | 30            |   |
| HMVC 142E | 27.961"x3F                       | 712.0   | 840     | 870     | 78     | 15      | 12.0   | 40            | 25                | 25            |   |
| HMVC 150E | 29.536"x3F                       | 752.0   | 883     | 912     | 79     | 15      | 12.0   | 40            | 25                | 25            |   |
| HMVC 160E | 31.504"x3F                       | 802.0   | 936     | 965     | 80     | 16      | 12.0   | 40            | 25                | 25            |   |
| HMVC 170E | 33.473"x3F                       | 852.0   | 990     | 1020    | 83     | 16      | 13.0   | 40            | 26                | 25            |   |
| HMVC 180E | 35.441"x3F                       | 902.0   | 1043    | 1075    | 86     | 17      | 15.0   | 40            | 30                | 25            |   |
| HMVC 190E | 37.410"x3F                       | 952.0   | 1097    | 1126    | 86     | 17      | 15.0   | 40            | 30                | 25            |   |

NOTA: Para todas las tuercas HMV\_E y HMVC\_E, la rosca para inyección de aceite es G1/4"

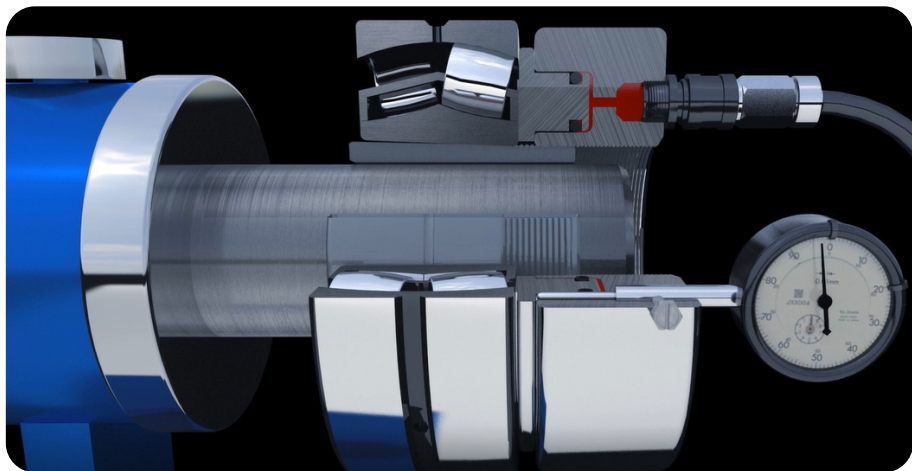
Fabricamos también Tuercas Hidráulicas en medidas especiales y sin rosca, bajo consulta (HMV\_E/A)

## VIDEOS TÉCNICOS DE MONTAJE Y DESMONTAJE USANDO LA TUERCA HIDRÁULICA

SITIO BGL | [www.bgl.com.br/esp/treinamento.htm](http://www.bgl.com.br/esp/treinamento.htm)

MONTAJE | Videos y Guías 2, 4, 5, 7, 9, 10

DESMONTAJE | Videos y Guías 13 y 15



### REPUESTOS ORIGINALES BGL

Todas las piezas y herramientas BGL están marcadas con láser con el logotipo BGL, el código de pieza y el número de lote. Esto garantiza la rastreabilidad, fácil identificación y autenticidad como piezas originales BGL.



Calidad • Precisión • Agilidad • Tradición • Ética

# BGL®

Herramientas para Rodamientos

Desde 1957 • ISO 9001

**BGL - BERTOLOTO & GROTTA LTDA.**

Av. Major José Levy Sobrinho, 1296  
13486-190 • Limeira-SP • Brasil  
+55 19 3451.8210 • +55 19 99155.1332  
[info@bgl.com.br](mailto:info@bgl.com.br) • [www.bgl.com.br/esp](http://www.bgl.com.br/esp)

