

# BGL<sup>®</sup>

## GENUINE PARTS



Lock Washer



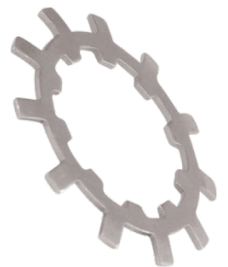
Lock Nut



Split Adapter Sleeve



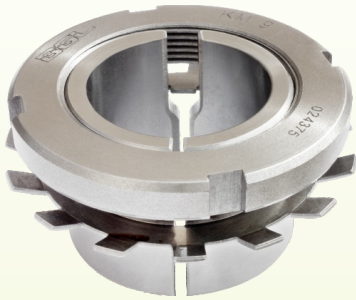
Spacer Ring



Lock Washer

# PARTS FOR TRACTORS AND AGRICULTURAL IMPLEMENTS





Split Adapter Sleeve



Lock Nut



Lock Washer



Spacer Ring



Thrust Ring



Lock Washer



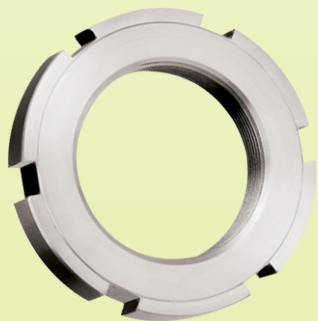
Lock Nut



Thrust Ring



Lock Washer



Lock Nut



Hook Spanners



Lock Washer



## CNH (CASE / NEW HOLLAND) PRODUCT LINE

ORIGINAL PART NUMBER	DESCRIPTION	HOOK SPANNER	EQUIPMENT MODELS USING IT	PLACE OF APPLICATION ON THE DEVICE
00141225	Lock Nut	HN 8-9	Sugar Cane Harvester 7000 / 7700	Chopping Roller Wheel
00146521	Lock Nut	HN 18-20	----	----
00146523	Lock Washer	---	Sugar Cane Harvester 7000 / 7700	Primary Extractor
00146524	Lock Nut	HN 18-20	Sugar Cane Harvester 7000 / 7700	Primary Extractor
00146534	Lock Nut	HN 12-13	---	---
00146590	Lock Nut	HN 10-11	---	---
00146591	Lock Washer	---	---	---
00901054	Lock Washer	---	---	---
00901083	Lock Washer	---	---	---
00901084	Lock Nut	HN 10-11	---	---
00901092	Lock Washer	---	---	---
306740	Split Adapter Sleeve (Full)	HN 8-9	Harvester 35 mm Shaft	Straw Walker Spacer 5050/8055
306740-P	Split Adapter Sleeve 306740 and 84991522	HN 8-9	Harvester 35 and 38 mm Shaft	Straw Walker Spacer 5050/8055
326085	Lock Nut	HN 10-11	---	---
354887	Split Adapter Sleeve (Full)	HN 8-9	Harvester 30 mm Shaft	Straw Walker Crankshaft Sleeve 804
407948A1	Lock Nut	---	Sugar Cane Harvester AHX 4000	---
410880	Split Adapter Sleeve Nut 306740 and 84991522	---	Harvester 35 and 38 mm Shaft	Straw Walker Spacer
412092	Lock Washer	---	---	---
412351	Lock Nut	HN 7	---	---
412352	Lock Washer	---	---	---
543835	Split Adapter Sleeve 354887	HN 8-9	Harvester 30 mm Shaft	Straw Walker Crankshaft Sleeve
9579221	Lock Nut m 100x1.5	HN 18-20	CNH 7610 SM / 7630 / 7830 / 8030	ZF Traction - APL 345 and 350
28450278	Adapter Sleeve	---	---	---
47996296	Lock Nut with Bores	HN 17	A 8800	Harvester - Chopper Wheel
73382375	Lock Washer	---	---	---
73386696	Lock Nut	HN 12/13	---	---
84991522	Split Adapter Sleeve (Full)	---	Harvester 38 mm Shaft	Straw Walker Spacer
87254514	Lock Nut m 100x2 - 2 Bores on the Face	HN 21-22	---	---
87254871	Lock Nut	---	---	---
87255100	Steel Sleeve for Lifting Arm	---	Sugar Cane Harvester A 7700 / 7000	Lifting Arm for Row Separator
87255101	Steel Sleeve for Edge Cutter	---	Sugar Cane Harvester A 7700 / 7000	Arm for Sugar Cane Cutter
87255391	Lock Nut - 2 Bores on the Face	HN 16	---	---
87255400	Lock Nut	---	---	---
87408432	Lock Nut - 2 Bores on the Face	HN 18-20	---	---
87470775	Lock Washer	---	880 CF	Horizontal Pinion
87470776	Lock Nut	HN 5-6	880 CF	Horizontal Pinion
87490618	Lock Nut	---	---	Shaking Control
90424279	Lock Washer	---	---	---



## VALMET / VALTRA PRODUCT LINE

ORIGINAL PART NUMBER	DESCRIPTION	HOOK SPANNER	EQUIPMENT MODELS USING IT	PLACE OF APPLICATION ON THE DEVICE
LB 3009	Lock Nut	HN 5-6	---	---
LB 3010	Lock Nut	HN 5-6	VT 118 / 128 / 138 / 148 / 1280	Front Traction Pinion
LB 3011	Lock Nut	HN 7	A 650 / 750 / 850 / 950 / 990	Pinion Conical Shaft 270
LB 3013	Lock Nut	HN 8-9	VT 60/62/65/68/75/78/85/86/88/110/118/128/148	Side Gear Shaft / Rear Pinion
LB 3014	Lock Nut	HN 8-9	VT All	Differential / Side Shaft
LB 3015	Lock Nut	HN 10-11	VT 60 /62 / 65 / 85 / 86	Power Outlet Nut
LB 5010	Lock Washer	---	VT 118 / 128 / 138 / 148 / 1280	Front Traction Pinion
LB 5011	Lock Washer	---	VT 60 / 80 / ID	Pinion
LB 5013	Lock Washer (MB 8 VAL GR)	---	VT60/62/65/68/75/78/85/86/88/110/118/128/138/148	Side Gear Shaft / Rear Pinion
LB 5014	Lock Washer	---	VT All	Side Shaft
LB 5015	Lock Washer	---	VT 60 / 62 / 65 / 85 / 86	TDP / Power Outlet
LB 5015A	Lock Washer	---	---	---
229270	Lock Nut (KM 12 VAL)	HN 12-13	VT 118 / 128 / 138 / 148 / 1280	Front Traction Hub
440780	Lock Washer (MB 12 VAL RT)	---	VT 118 / 128 / 138 / 148 / 1280	Front Hub
627640	Self-Locking Lock Nut m 25x1.5	HN 5-6	A 650 / 750 / 850 / 950 / 990	Side Shaft and Front Traction 270
651711	Spacer Ring	---	VT 60/62/65/68/75/78/85/86/88/785/685	TDP Retaining Track
651940	Spacer Ring	---	785	Gearshift
678710	Lock Washer (MB 7 Dupla)	---	A 650 / 750 / 850 / 950 / 990	Pinion Conical Shaft 270
821320	Lock Washer (MB 8 VAL RT)	---	VT60/62/65/85/86/88/110/118/128/138/148/880/980	Side Gear Shaft / Rear Pinion
01117395	Adapter Sleeve	HN 10-11	BC 4500	Rear Striker
01117402	Adapter Sleeve	HN 10-11	BC 4500	Rear Striker
01120600	Lock Nut	HN 5-6	---	---
01120663	Lock Nut	HN 5-6	---	---
26746907	Adapter Sleeve	HN 10-11	BC 4500	Rear Striker
34057900	Thrust Ring	---	BH 160 / 180	Carraro Rear Traction Bearing
34058000	Thrust Ring	---	BH 160 / 180	Carraro Front Traction Bearing
80297700	Lock Nut m 90x1.5	HN 17	Valtra 880 / 980	ZF Traction - APL335
80604000	Lock Nut m 100x1.5	HN 18-20	Valtra 1180 / 985	Sugar Cane Harvester - A 7700/7000
80740900	Lock Washer	---	VT 1280	Side Gear Shaft
80907700	Lock Nut m 115x.5	HN 21-22	Valtra 1280 / 1380 / 1580 / 1780 / 1880	ZF Traction - APL 359
81333400	Lock Nut m 90x1.5	HN 17	Valtra 685-4/700-4S/785-4/800-4S/885-S/BL66/BL77	ZF Traction - APL 335 and 340
82315000	Lock Nut	HN 2-3	---	---
VA126630	Thrust Ring	---	BH 160 / BH 180	Carraro Front Traction Bearing

## MARCHESAN / TATU PRODUCT LINE

ORIGINAL PART NUMBER	DESCRIPTION	HOOK SPANNER
0503010210	Lock Washer	---
0503010211	Lock Nut	HN 8-9
0503010329	Lock Washer	---
0503010330	Lock Nut	HN 8-9
0503010457	Lock Washer	---
0503010458	Lock Nut	HN 14
0503010553	Lock Washer	---
0503010554	Lock Nut	HN 16
0503012702	Lock Nut	HN 12-13
0503012703	Lock Washer	---
0503014546	Lock Nut	HN 10-11
0503014547	Lock Washer	---
0503019619	Lock Nut	HN 5-6
0503019620	Lock Washer	---

## JAN LINE / MACHINES

ORIGINAL PART NUMBER	DESCRIPTION	HOOK SPANNER
62090634	Lock Washer	HN 18-20
62090652	Lock Washer	---
62090653	Lock Washer	---
70020326	Adapter Sleeve	HN 7
70030101	Lock Nut	HN 4
70030451	Lock Nut	HN 7
70030553	Lock Nut	HN 8-9
70030751	Lock Nut	HN 10-11
70031151	Lock Nut	HN 2-3
70040101	Lock Washer	---
70040476	Lock Washer	---
70040578	Lock Washer	---
70040776	Lock Washer	---
70041151	Lock Washer	---

## ZF CROSS-REFERENCE

ORIGINAL PART NUMBER	DESCRIPTION	HOOK SPANNER	EQUIPMENT MODELS USING IT	PLACE OF APPLICATION ON THE DEVICE
0737503039	Lock Nut m 100x1.5	HN 18-20	Maxion 9150	ZF Traction - APL 356
0737503040	Lock Nut m 115x1.5	HN 21-22	Valtra 1280 / 1380 / 1580 / 1780 / 1880 AGCO/Maxion 9170 / MF 660 / MF 680 / Deutz Ax 4.190 John Deere 7.500	ZF Traction - APL 359
0737503041	Lock Nut m 90x1.5	HN 17	Valtra 880 / 980 CNH 6610 / 7610	ZF Traction - APL 335
0737503042	Lock Nut m 100x1.5	HN 18-20	Valtra 1180 / 985 CBT 8060 / 8260 AGCO/MF 290/292/295/297/299/610/620/630/640-Deutz Ax 4.190 John Deere 6300 / 6405 CNH 7610 SN / 7630 / 7830 / 8030	ZF TractionF - APL 345 and 350
0737503049	Lock Nut m 90x1.5	HN 17	Valtra 685-4 / 700-4S / 785-4 / 800-4S / 885-S / BL 66 / BL 77 AGCO/MF 250/265/275/281/283/5275/5285/5290-Deutz Ax 4.90 John Deere 5403 / 5600 / 5605 / 5700 / 5705	ZF Traction - APL 335 and 340

## JOHN DEERE / SLC PRODUCT LINE

ORIGINAL PART NUMBER	DESCRIPTION	HOOK SPANNER	EQUIPMENT MODELS USING IT	PLACE OF APPLICATION ON THE DEVICE
13P-1025	Adapter Sleeve	HN 5-6	----	---
13P-1034	Adapter Sleeve	HN 8-9	----	---
13P-1039	Adapter Sleeve	HN 7	----	---
AZ 40236	Adapter Sleeve	HN 10-11	----	---
CQ 27377	Lock Nut m 115x1.5	HN 21-22	John Deere 7.500	ZF Traction - APL 359
CQ 2979254	Lock Nut m 100x1.5	HN 18-20	6300 / 6405	ZF Traction - APL 345 and 350
F 067052	Lock Nut with Latch	HN 8-9	H 270	Aligning Roller Arm Pin
L 60094	Lock Nut m 90x1.5	HN 17	John Deere 5403/5600/5605/5700/5705	ZF Traction - APL 335 and 340
T 116822	Lock Nut m 100x1.5	HN 18-20	John Deere 6300 / 6405	ZF Traction - APL 345 and 350
Z 42023	Lock Washer (MB 8 VAL RT)	---	---	---
Z 42024	Lock Nut	HN 8-9	---	---
1710 D	Lock Nut	HN 15	---	Chopper Hub Drawbar Liner Cylinder Rod
12M7016	Lock Washer	---	---	---
12M7083	Lock Washer	---	---	---
12M7086	Lock Washer	---	---	---
12M7105	Lock Washer	---	---	---
52M7011	Lock Nut	HN 10-11	---	---
52M7012	Lock Nut	HN 5-6	---	---
52M7015	Lock Nut	HN 12-13	---	---
52M7016	Lock Nut	HN 7	---	---
CTX 10368	Bearing Sleeve + Lock Nut	HN 16	Sugar Cane Harvester CH 330/CH 530/CH 570	Drawbar Liner Cylinder Rod

## FORD EQUIVALENCES

ORIGINAL PART NUMBER	DESCRIPTION	HOOK SPANNER	EQUIPMENT MODELS USING IT	PLACE OF APPLICATION ON THE DEVICE
CAR 126629	Thrust Ring	---	BH 160 / BH 180	Carraro Rear Traction Bearing
CAR 126630	Thrust Ring	---	---	---
ZP 0737503041	Lock Nut m 90x1.5	HN 17	ZF Traction All - APL 335	Traction Hub

## CBT LINE

ORIGINAL PART NUMBER	DESCRIPTION	HOOK SPANNER	EQUIPMENT MODELS USING IT	PLACE OF APPLICATION ON THE DEVICE
7A641	Lock Washer	---	---	---
7A679	Lock Nut	HN 8-9	---	---
03070710-1	Lock Nut	HN 10-11	All	Power Outlet Nut
090-070-2032	Lock Nut	HN 8-9	1090 / 1105 / 8060	Differential Pinion Nut
090-070-2033	Lock Washer	---	1090 / 1105 / 8060	Differential Pinion Lock

## LINHA AGCO / MASSEY

ORIGINAL PART NUMBER	DESCRIPTION	HOOK SPANNER	EQUIPMENT MODELS USING IT	PLACE OF APPLICATION ON THE DEVICE
020794	Lock Nut m 115x1.5	HN 21-22	Maxion 9170 / MF 660 / 680 Deutz Ax 4.190	ZF Traction - APL 359
033621R1	Lock Nut m 90x1.5	HN 17	AGCO/MF 250/265/275/281/283/5275/5285/5290-Deutz Ax 4.90	ZF Traction - APL 335 and 340
036412R1	Lock Nut m 100x1.5	HN 18-20	Maxion 9150	ZF Traction - APL 356
040966R1	Beveled Thrust Ring	---	BT 150 / 170 / 190 / 210	Front Shaft
040967R1	Thrust Ring	---	BT 150 / 170 / 190 / 210	Front Shaft
1441695X1	Lock Washer	---	---	---
180455M1	Lock Washer (AC50 AGCO)	---	MF All	Lock Washer for the Rear Pinion
3176334M1	Lock Nut m 100x1.5	---	AGCO/MF 290/292/295/297/299/610/620/630/640-Deutz Ax 4.190	ZF Traction - APL 345 and 350
3469079M1	Lock Nut	HN 8-9	---	---
70.932.996	Lock Nut	HN 7	---	Ball Bearing Counter Nut
880708520040	Lock Nut	HN 8-9	---	---
880709520040	Lock Washer	---	---	---
ACX 0028290	Hook Spanner	---	---	---
ACX 0028160	Lock Nut	HN 10-11	---	---
ACX 0028170	Lock Washer	---	---	---

## LINHA KAMAQ / IMPLEMENTOS

ORIGINAL PART NUMBER	DESCRIPTION	HOOK SPANNER
026.00325	Lock Nut	HN 8-9
026.00326	Lock Washer	---
026-00327	Lock Washer	HN 10-11
026-00328	Lock Washer	---
026.00329	Lock Nut	HN 10-11
026.00330	Lock Washer	---
026.00331	Lock Nut	HN 7
026-00336	Lock Nut	HN 4
026.01258	Lock Nut	HN 5-6
026.05641	Lock Washer	---
026.07427	Lock Washer	---
026.14292	Lock Nut	HN 12-13
026.14293	Lock Washer	---
026.17043	Lock Nut	HN 5-6
026-18227	Lock Nut	HN 5-6
026-18228	Lock Washer	---
026.38517	Lock Nut	HN 5-6
412.23224	Lock Nut	HN 5-6

## CONTACT YOUR DISTRIBUTOR

2026/03 Release

BGL is a 100% Brazilian company, ISO 9001 certified with nearly 70 years of tradition and expertise in manufacturing components to locate industrial bearings (Sleeves and Nuts) as well as parts for tractors and farm equipment. The credibility achieved over the years allows BGL to be recognized worldwide as a manufacturer of genuine parts for tractors and agricultural machinery with superior quality and precision.



The manufacturing process is vertical, including casting, machining and stamping and a laboratory for material and dimension control.

### BGL ORIGINAL PARTS

All BGL parts and tools come laser-marked with the BGL logo, part code, and lot number. This ensures traceability, easy identification, and guarantees authenticity as original BGL parts.



**Quality • Accuracy • Agility • Tradition • Ethics**

**BGL**<sup>®</sup>  
Agricultural Parts

Since 1957

ISO 9001

**BGL - BERTOLOTO & GROTTA LTDA.**

Av. Major José Levy Sobrinho, 1296

13486-190 • Limeira-SP • Brazil

+55 19 3451.8210 • +55 19 99155.1332

info@bgl.com.br • www.bgl.com.br

