

BGL®

Since 1957

ISO 9001

Precision Nut **KMT and KMTA** Quality and Precision



FIXING ELEMENTS

PRECISION NUTS

KMT 0 to KMT 15

KMT 16 to 68

KMTA (All Sizes)



PRECISION NUTS

These Nuts are used to secure bearings on **machines and equipment that require precision**, such as spindles and ball screws, lathes, milling machines, motors, grinders, shut-off valves, among others.

To lock the Nut onto the shaft, it features three pins positioned evenly around the circumference, which are pressed against the shaft using set screws.

The pins are angled to match the thread angle, so tightening them does not alter the axial load on the Nut or deform it, ensuring the accuracy of the assembly.

Although both types use the same locking system, KMT and KMTA Nuts differ in their outer profile and the tools required for tightening.

Material: Carbon Steel

Surface Treatment: Phosphating

Optional: Stainless Steel

ASSEMBLY

KMT Nuts are assembled using Hook Spanners. **Up to size 15**, they can also be mounted using open-end **wrenches**. **KMTA** Nuts are assembled using **pin spanners or socket wrenches with pins**. Locking is done by tightening the set screws. After installation, the screws should first be lightly tightened until the brass pins touch the shaft threads. Only then should the screws be tightened gradually and alternately to balance the tightening torque on all three screws.

DISASSEMBLY

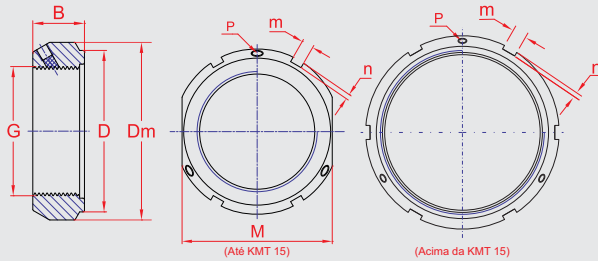
To disassemble the Precision Nut, first loosen the three screws. The brass pins may still be engaged in the shaft threads. Gentle taps on the Nut using a rubber or copper hammer, close to the screws, will push the pins back and release the Nut so it can be unscrewed with the appropriate tool.

MORE INFORMATION

Technical Instructions: www.bgl.com.br/en/docs/uso-porcac-precisao-i.pdf

Electronic Catalog: www.bgl.com.br/en/catalogo/enus/porcapre_cod.html

KMT PRECISION NUTS



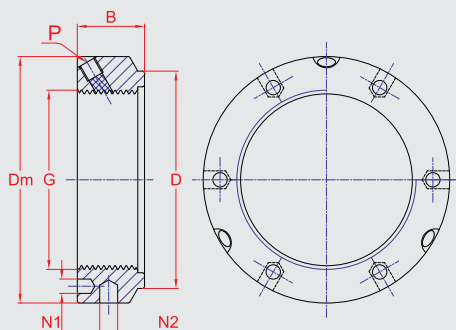
- G** Thread
- Dm** Outer Diameter
- D** Protrusion Diameter
- B** Thickness
- m** Slot Width
- n** Slot Depth
- M** Measurement Requirement for Spanner
- P** Lock Screw

* Runout = 0.005 mm (5 µm)

Part Number	G mm	Dm mm	D mm	B mm	m mm	n mm	M mm	P	Recommended Tightening Torque Nm	Hook Spanner Specification
KMT 0	M 10x0,75	28	23	14	4	2	24	M 5	4.5	HN 2-3
KMT 1	M 12x1	30	25	14	4	2	27	M 5	4.5	HN 2-3
KMT 2	M 15x1	33	28	16	4	2	30	M 5	4.5	HN 4
KMT 3	M 17x1	37	33	18	5	2	34	M 6	8	HN 5-6
KMT 4	M 20x1	40	35	18	5	2	36	M 6	8	HN 5-6
KMT 5	M 25x1,5	44	39	20	5	2	41	M 6	8	HN 5-6
KMT 6	M 30x1,5	49	44	20	5	2	46	M 6	8	HN 5-6
KMT 7	M 35x1,5	54	49	22	5	2	50	M 6	8	HN 7
KMT 8	M 40x1,5	65	59	22	6	2.5	60	M 8	18	HN 8-9
KMT 9	M 45x1,5	70	64	22	6	2.5	65	M 8	18	HN 10-11
KMT 10	M 50x1,5	75	68	25	7	3	70	M 8	18	HN 10-11
KMT 11	M 55x2	85	78	25	7	3	80	M 8	18	HN 12-13
KMT 12	M 60x2	90	82	26	8	3.5	85	M 8	18	HN 12-13
KMT 13	M 65x2	95	87	28	8	3.5	90	M 8	18	HN 14
KMT 14	M 70x2	100	92	28	8	3.5	95	M 8	18	HN 15
KMT 15	M 75x2	105	97	28	8	3.5	100	M 8	18	HN 16
KMT 16	M 80x2	110	100	32	8	3.5	-	M 8	18	HN 17
KMT 17	M 85x2	120	110	32	10	4	-	M 10	35	HN 18-20
KMT 18	M 90x2	125	115	32	10	4	-	M 10	35	HN 18-20
KMT 19	M 95x2	130	120	32	10	4	-	M 10	35	HN 18-20
KMT 20	M 100x2	135	125	32	10	4	-	M 10	35	HN 18-20
KMT 22	M 110x2	145	134	32	10	4	-	M 10	35	HN 21-22
KMT 24	M 120x2	155	144	32	10	4	-	M 10	35	HN 24
KMT 26	M 130x2	165	154	32	12	5	-	M 10	35	HN 26
KMT 28	M 140x2	175	164	32	14	5	-	M 10	35	HN 27
KMT 30	M 150x2	185	174	32	14	5	-	M 10	35	HN 28
KMT 32	M 160x3	195	184	32	14	5	-	M 10	35	HN 30
KMT 34	M 170x3	205	194	32	14	5	-	M 10	35	HN 31
KMT 36	M 180x3	215	204	32	16	5	-	M 10	35	HN 32-33
KMT 38	M 190x3	225	214	32	16	5	-	M 10	35	HN 34
KMT 40	M 200x3	235	224	32	18	5	-	M 10	35	HN 36
KMT 44	Tr 220x4	265	254	36	20	10	-	M 10	60	HN 40
KMT 48	Tr 240x4	290	279	38	20	10	-	M 12	60	HND 280-300
KMT 52	Tr 260x4	310	299	38	20	10	-	M 12	60	HND 300-320
KMT 56	Tr 280x4	330	319	40	24	12	-	M 12	60	HND 320-345
KMT 60	Tr 300x4	360	349	42	24	12	-	M 12	60	HND 350-375
KMT 64	Tr 320x5	390	379	45	24	12	-	M 12	60	HND 410-430
KMT 68	Tr 340x5	410	399	48	24	12	-	M 12	60	HND 440-470

* Larger sizes available upon request.

KMTA PRECISION NUTS



- G** Thread
- Dm** Outer Diameter
- D** Protrusion Diameter
- B** Thickness
- N1** Hole ID for Pin Spanner
- N2** Hole ID for Pin Spanner
- P** Lock Screw

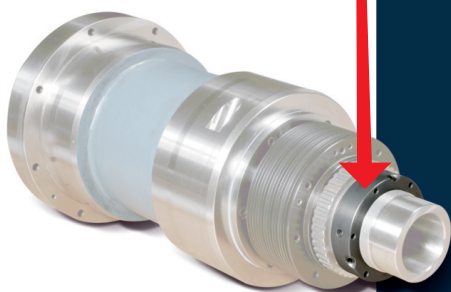
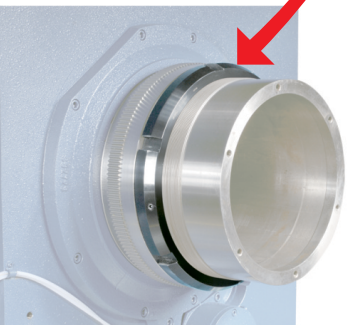
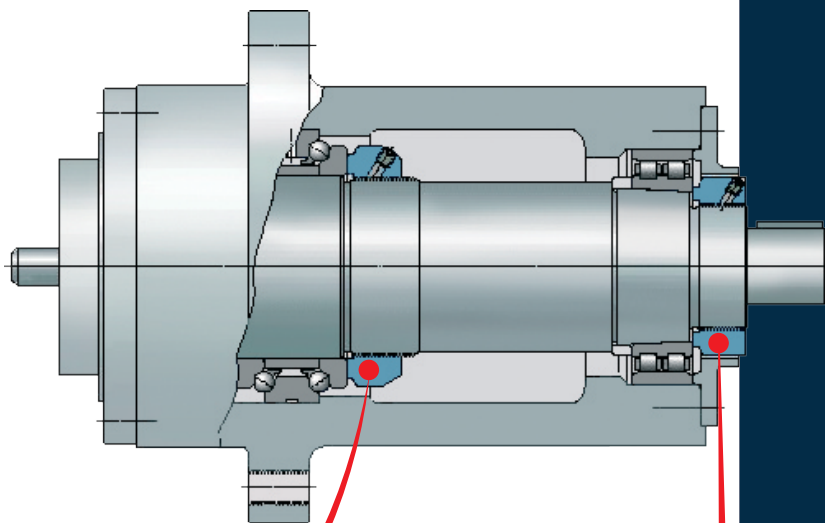
Part Number	G mm	Dm mm	D mm	B mm	N1 mm	N2 mm	P	Recommended Tightening Torque Nm
KMTA 5	M 25x1,5	42	35	20	4.3	4	M 6	8
KMTA 6	M 30x1,5	48	40	20	4.3	5	M 6	8
KMTA 7	M 35x1,5	53	47	20	4.3	5	M 6	8
KMTA 8	M 40x1,5	58	52	22	4.3	5	M 6	8
KMTA 9	M 45x1,5	68	58	22	4.3	6	M 6	8
KMTA 10	M 50x1,5	70	63	24	4.3	6	M 6	8
KMTA 11	M 55x1,5	75	70	24	4.3	6	M 6	8
KMTA 12	M 60x1,5	84	75	24	5.3	6	M 8	18
KMTA 13	M 65x1,5	88	80	25	5.3	6	M 8	18
KMTA 14	M 70x1,5	95	86	26	5.3	8	M 8	18
KMTA 15	M 75x1,5	100	91	26	6.4	8	M 8	18
KMTA 16	M 80x2	110	97	30	6.4	8	M 8	18
KMTA 17	M 85x2	115	102	32	6.4	8	M 10	35
KMTA 18	M 90x2	120	110	32	6.4	8	M 10	35
KMTA 19	M 95x2	125	114	32	6.4	8	M 10	35
KMTA 20	M 100x2	130	120	32	6.4	8	M 10	35
KMTA 22	M 110x2	140	132	32	6.4	8	M 10	35
KMTA 24	M 120x2	155	142	32	6.4	8	M 10	35
KMTA 26	M 130x3	165	156	32	6.4	8	M 10	35
KMTA 28	M 140x3	180	166	32	6.4	10	M 10	35
KMTA 30	M 150x3	190	180	32	6.4	10	M 10	35
KMTA 32	M 160x3	205	190	32	8.4	10	M 10	35
KMTA 34	M 170x3	215	205	32	8.4	10	M 10	35
KMTA 36	M 180x3	230	215	32	8.4	10	M 10	35
KMTA 38	M 190x3	240	225	32	8.4	10	M 10	35
KMTA 40	M 200x3	245	237	32	8.4	10	M 10	35

BGL®

www.bgl.com.br/en

BGL PRECISION NUT APPLICATION

SPINDLE



CNC Lathe Shaft
KMT / KMTA PRECISION NUT

MORE INFORMATION

General Electronic Catalog: www.bgl.com.br/en/catalogo

CONTACT YOUR DISTRIBUTOR

2026/02 Release

BGL is a 100% Brazilian company, specialist and a market leader in industrial bearing sleeves and accessories. With nearly 70 years of tradition, its core values are quality, agility, and ethics, ensuring a high standard of quality, credibility, and precision — attributes recognized worldwide.

Thanks to proven quality, BGL products are used by leading manufacturers of machinery and equipment, earning the trust of major national and international clients. As part of its commitment to excellence, BGL invests in quality programs, evidenced by its ISO 9001 certification.



INDUSTRIAL BEARING LINE

PRODUCTS

- Adapter Sleeves
- Hydraulic Adapter Sleeves
- Withdrawal Sleeves
- Hydraulic Withdrawal Sleeves
- Locking Nuts, Adjustment Nuts, Self-Locking Nuts
- Precision Nuts
- Lock Washers, Locking Devices

TOOLS

- Hydraulic Pumps
- Hydraulic Nuts
- Dial Indicator with Extensions Rods
- Hook Spanners
- Extension Tubes
- Feeler Gauges
- Training Kit

Contact us for Special Parts!

BGL ORIGINAL PARTS

All BGL parts and tools come laser-marked with the BGL logo, part code, and lot number. This ensures traceability, easy identification, and guarantees authenticity as original BGL parts.



Quality • Accuracy • Agility • Tradition • Ethics

BGL®

Bearing Accessories

Since 1957 • ISO 9001

BGL - BERTOLOTO & GROTTA LTDA.

Av. Major José Levy Sobrinho, 1296
13486-190 • Limeira-SP • Brazil
+55 19 3451.8210 • +55 19 99155.1332
info@bgl.com.br • www.bgl.com.br/en

