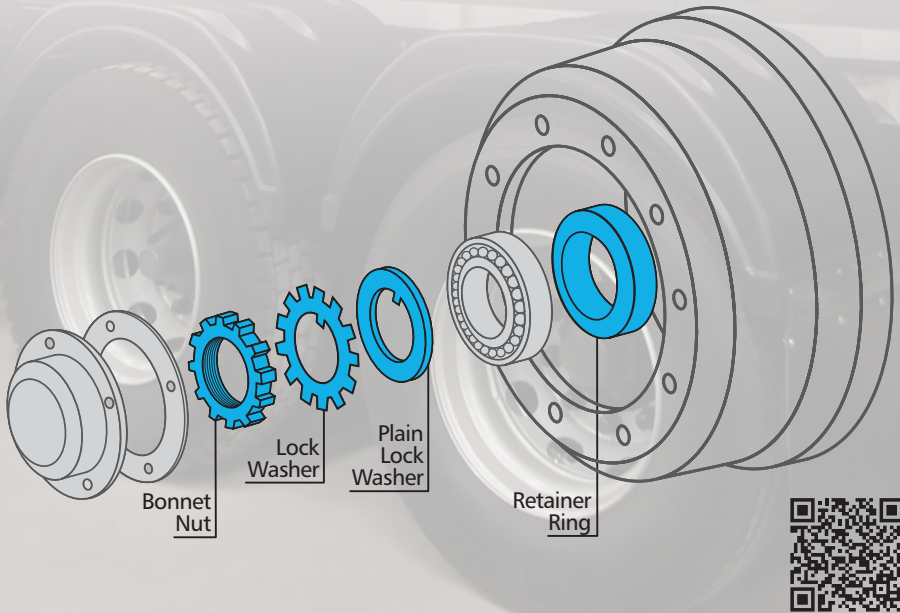




SINCE 1957

ISO 9001



**TRAILERS, TRUCKS
AND TRANSLOADERS LINE**



SET

SET

BGL Part Number - APC TRAVA RT		
Original Part Number - 301000-900 / 7301000901 1460130054		
Application - Trailers Guerra / Noma / Facchini / Krone (Modern) Gotti / Silpa		
Description Lock Washer		
Internal Diameter	Thickness	External Diameter
90 mm	2,7 mm	145 mm

BGL Part Number - APC 90		
Original Part Number - 14-601-20013 1460130017		
Application - Trailers Silpa / Krone / Iderol until 90 (Sugarcane)		
Description Plain Washer with Internal Tooth - Rear Hub		
Internal Diameter	Thickness	External Diameter
90 mm	3 mm	120,7 mm

BGL Part Number - PC M90X2		
Original Part Number - 000982-2 / 1260110606 1110024401		
Application - Trailers Guerra / Noma / Facchini / Krone (Modern) / Silpa / Iderol / 1, 2, 3 Axes Semi-Trailers / Trucks MB 1618 / 1519		
Description Bonnet Nut - Rear Hub		
Screw	External Diameter	
M 90 x 2	130 mm	

BGL Part Number - AR 90 127X94,9X22R		
Original Part Number -		
Application - Trailers 90 mm Axle Trailer		
Description Retainer Ring - Straight Beveling		
Internal Diameter	Thickness	External Diameter
94,9 mm	22 mm	127 mm

BGL Part Number - APC 90 TRAVA		
Original Part Number - 7007005018008 / 389.356.0873 146010301157		
Application - Trailers Guerra / Silpa (Sugarcane) / Guerra (Antiga)		
Description Lockwasher - Inverted External Tooth		
Internal Diameter	Thickness	External Diameter
90,5 mm	2,7 mm	144 mm

BGL Part Number - APC 90 LISA		
Original Part Number - 5001005067003 / 7007005017006 1460130145		
Application - Trailers Silpa (Sugarcane)		
Description Plain Washer with Internal/External Tooth - Rear Hub		
Internal Diameter	Thickness	External Diameter
90 mm	3,75 mm	125 mm



SET

SET

BGL Part Number - PC M80X2 ou PC 80 12F		
Original Part Number - 3010-00423-0 / 201000046 9202597 / 201000046		
Application - Trailers Randon (Modern) / Noma / Silpa 1, 2, 3 Axes Semi-Trailers (Sugarcanes)		
Description Bonnet Nut - Rear Hub		
Screw / mm	Screw / Pol.	External Diameter
M 80 x 2	3,137" x 12F	125 mm

BGL Part Number - APC 80 TRAVA RT		
Original Part Number - 3010-00694 / 251206066 1460110020 / 213000739-P		
Application - Trailers Randon / Silpa / MB 1513 / 1519		
Description Lock Washer		
Internal Diameter	Thickness	External Diameter
81 mm	2,7 mm	132 mm

BGL Part Number - APC 80 / APC 80A / APC 80L			
Original Part Number - 3010-00693 / P1460110043			
Application - Trailers Randon / Silpa / Trucks for 15 ton. Volkswagen Cargo			
Description Plain Washer			
APC 80	Int. Diameter	Thickness	Ext. Diam.
	81 mm	3 mm	126 mm
APC 80A	Int. Diameter	Thickness	Ext. Diam.
	80,5 mm	3 mm	122 mm
APC 80L	Int. Diameter	Thickness	Ext. Diam.
	80,5 mm	5 mm	120 mm

BGL Part Number - PC M80X2 or PC 80 12F		
Original Part Number - 3010-00423-0 9202597		
Application - Trailers Randon (Modern) / Noma / Silpa 1, 2, 3 Axes Semi-Trailers (Sugarcanes)		
Description Bonnet Nut - Rear Hub		
Screw / mm	Screw / Pol.	External Diameter
M 80 x 2	3,137" x 12F	125 mm

BGL Part Number - APC 80 TRAVA		
Original Part Number - 301000-900 / 7301000901 1460130054		
Application - Trailers Silpa / Light Trucks / Guerra (Modern)		
Description Lock Washer - Inverted External Tooth		
Internal Diameter	Thickness	External Diameter
80,2mm	2,7 mm	137 mm

BGL Part Number - APC 80 LISA		
Original Part Number - 7007005017006 146130133		
Application - Trailers Guerra / Silpa (Modern)		
Description Plain Washer		
Internal Diameter	Thickness	External Diameter
80,5 mm	3,7 mm	125 mm

NEW IN THE BGL PRODUCT LINE

Emergency Castellated Nut

Don't Get Stuck on the Road!

We present the **PC M90x2 SOS**, the emergency solution for truck drivers facing wheel mounting issues.

What is it for? When the axle thread that holds your truck wheel gets stripped and the original nut no longer secures it, the **Emergency Castellated Nut** comes into action.

BENEFITS

- **Emergency Use:** Allows you to reach the nearest repair shop safely.
- **Road Safety:** Prevents you from being stranded in dangerous or remote areas.
- **Easy to Use:** Quick and practical, so you can get back on the road without delays.

Don't risk your safety or your cargo. Always keep an Emergency Castellated Nut in your toolbox. Because on the road, every minute counts!



BGL Part Number - **PC M90X2 SOS**

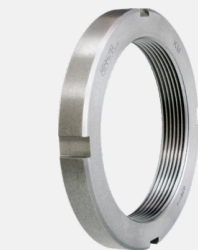
Application - Trailers Guerra / Noma / Facchini / Krone (Modern) / Silpa / Iderol / 1, 2, 3 Axes Semi-Trailers / Trucks MB 1618 / 1519

Description

Castellated Emergency Nut - Rear Hub

Screw
M 90 x 2

External Diameter
130 mm



SET

BGL Part Number - **KM 7****Original Part Number - 070-852-035-000****Application - Trailers**

Mercedes-Benz (1111 / 1113 / 1116)

Description

Parking Brake Nut

Screw

M 35 x 1,5

External Diameter

52 mm

BGL Part Number - **MB 7****Original Part Number -****Application - Trailers**

Mercedes-Benz (1111 / 1113 / 1116)

Description

Parking Brake Washer

Internal Diameter

35 mm

Thickness

1,2 mm

External Diameter

57 mm

SET

BGL Part Number - **KM 8****Original Part Number - 100000238031****Application - Trailers**

Randon / Suspensys

Description

Nut

Screw

M 40 x 15

External Diameter

58 mm

BGL Part Number - **MB 8****Original Part Number - 100000282271****Application - Trailers**

Randon / Suspensys

Description

Lock Washer

Internal Diameter

40 mm

Thickness

1,2 mm

External Diameter

62 mm

SET

BGL Part Number - **KM 10****Original Part Number - 184-054****Application - Trailers**

Scania

Description

Cardan Screw - Differential Pinion

Screw

M 50 x 1,5

External Diameter

70 mm

BGL Part Number - **MB 10****Original Part Number - 184-055****Application - Trailers**

Scania

Description

Cardan Washer - Differential Pinion

Internal Diameter

50 mm

Thickness

1,2 mm

External Diameter

74 mm

CONTACT YOUR DISTRIBUTOR

2025/05 Release

BGL is a 100% Brazilian company, ISO 9001 certified, with nearly 70 years of tradition and experience in the manufacturing of industrial bearing mounting components, as well as parts for Trailers, Trucks and Transloaders. The company is well-regarded in the market for its high standards of quality and precision, and is globally recognized for producing genuine parts.



BGL's manufacturing is fully verticalized, with in-house casting, machining, and stamping facilities, along with a dedicated laboratory for material and dimensional control.

BGL ORIGINAL PARTS

All BGL products are laser-marked with the brand logo, part code, and batch number on one of their surfaces. These details are essential for traceability, easy identification, and to ensure the part is an authentic BGL original.



Quality • Accuracy • Agility • Tradition • Ethics



Parts for Trailers, Trucks and Transloaders

BGL - BERTOLOTO & GROTTA LTDA.

Av. Major José Levy Sobrinho, 1296

13486-190 • Limeira-SP • Brazil

+55 19 3451.8210 • +55 19 99155.1332

info@bgl.com.br • www.bgl.com.br/en



Since 1957 • ISO 9001

