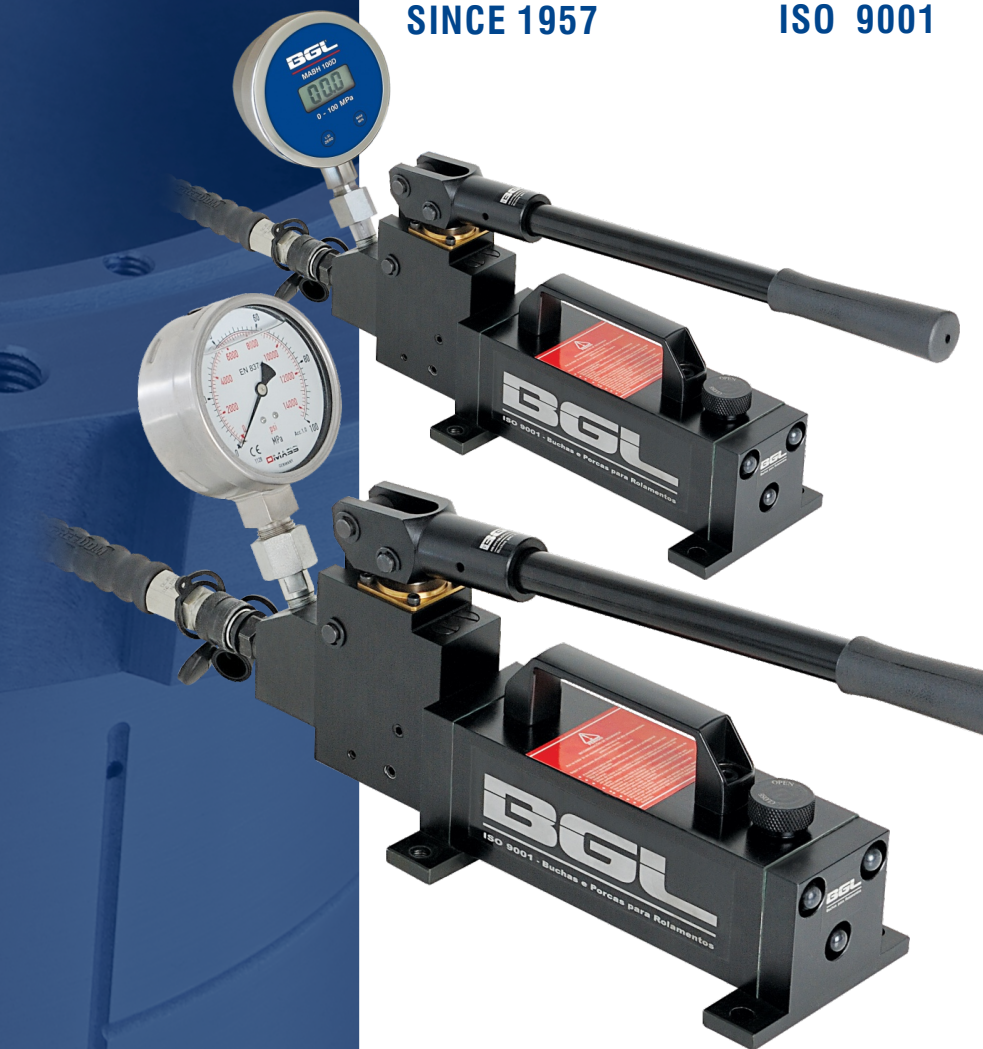


# BGL<sup>®</sup>

SINCE 1957

ISO 9001



## Hydraulic Pumps

# Hydraulic Pumps

**BGL** is a **100% Brazilian company and a market leader in bearing with tapered bore accessories**. With almost 70 years of tradition, its philosophy is based on quality, agility, and ethics, ensuring high standards, credibility, and precision — attributes recognized worldwide. Always attentive to new manufacturing technologies and continuous development, BGL also offers **Hydraulic Solutions**.

## **BGL HYDRAULIC PUMP**

It is a hydraulic tool that transfers the oil from the reservoir to the equipment it is connected to.

With the pressure generated, **it becomes possible to move and shift very heavy components with great ease**. The Hydraulic Pump is recommended for use with Hydraulic Sleeves and HMV Hydraulic Nuts, **assisting in mounting and especially dismounting**.

On sleeves, it injects oil into the grooves. On hydraulic nuts, it actuates the piston to push or remove the assembly (**Bearing/Sleeve**).

## **RECOMMENDED USES FOR THE BGL HYDRAULIC PUMP**

- Mounting or dismounting bearings in combination with a Hydraulic Nut;
- Dismounting bearings on Hydraulic Adapter Sleeves;
- Dismounting bearings with cylindrical bores on shafts prepared for oil injection;
- In specific and varied applications in industrial maintenance, always observing the maximum pressure for each pump model.

**BGL**<sup>®</sup>

Check the table below to choose the Hydraulic Pump that best fits your needs, considering the required pressure and oil capacity.

**ORDER USING BGL CODES:**

**Hydraulic Pumps with Analog Pressure gauge:** BH 100-0.7, BH 160, BH 160-4.8

**Hydraulic Pumps with Digital Pressure gauge:** BH 100-0.7D, BH 160D, BH 160-4.8D

**MAIN CHARACTERISTICS OF BGL HYDRAULIC PUMPS**

Models BGL Hydraulic Pumps	Working Pressure (MPa)	Oil Outlet per Cylinder stroke (ml)		Volume of the Container (L)	Volume of Usable (L)	Lever Effort (N)
		1 <sup>a</sup>	2 <sup>a</sup>			
<b>BH 100-0.7</b> Analog Pressure Gauge or <b>BH 100-0.7D</b> Digital Pressure Gauge	100	32	2.5	0.9	0.7	300
<b>BH 160</b> Analog Pressure Gauge or <b>BH 160D</b> Digital Pressure Gauge	160	32	1.6	2.2	1.9	460
<b>BH 160-4.8</b> Analog Pressure Gauge or <b>BH 160-4.8D</b> Digital Pressure Gauge	160	32	1.6	4.8	4.1	460

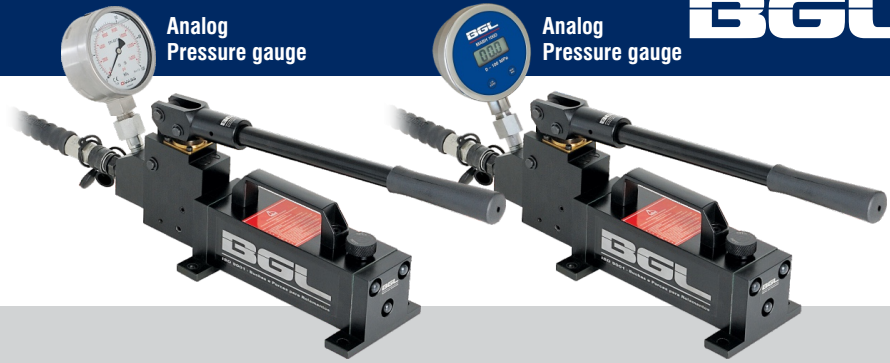
**EACH BGL HYDRAULIC PUMP INCLUDES (see images on the side)**

- 3-meter high-pressure hose: **MBH 160**
- Pressure gauge in MPa and PSI: **MABH 100** or **MABH 160** Analog  
**MABH 100D** or **MABH 160D** Digital
- Quick Coupling 1/4" BSP outlet fitting: complete **NIPLE ER** (729831 A+ 729832 A)
- Steel carrying case for the pump
- Instruction manual

PART NUMBER	SPARE ACCESSORIES (See images on the side)
<b>MABH 100 / MBH 100D</b>	Analog Pressure Gauge 100 MPa / Digital Pressure Gauge 100 MPa
<b>MABH 160 / MABH 160D</b>	Analog Pressure Gauge 160 MPa / Digital Pressure Gauge 160 MPa
<b>MBH 160</b>	Hydraulic Hose for Pumps 100 to 160 MPa
<b>NIPLE ER</b>	Quick Coupling Niple 1/4" BSP (Complete)
<b>729831 A</b>	Quick Female Coupling
<b>729832 A</b>	Niple Acople Rápido Macho

Analog  
Pressure gauge

Analog  
Pressure gauge



Pump Dimensions (mm)	Packaging Dimensions (mm)	Outlet Port (Quick Engagement)	Total Weight (Kg)	Application		
				Conic Bearings	With Hydraulic Nut	With Hydraulic Sleeves
410x180x120	540x280x170	1/4" BSP	12.2	1:12	HMV 10E until 134E	Assembles and Disassembles all Hydraulic Sleeves
				1:30	HMV 10E until 100E	
700x250x120	760x280x170	1/4" BSP	15.6	1:12	HMV 10E until 200E	
				1:30	HMV 10E until 150E	
700x270x220	760x300x370	1/4" BSP	24.6	1:12	All Sizes	
				1:30		

**NOTE:** Recommended hydraulic oil 68 HPL | 1 MPa = 10 Bar = 145 Psi



**NIPLE ER COMPLETE**  
(729831 A + 729832 A)  
Quick Coupling Niple 1/4" BSP



**729831 A**  
Quick Female Coupling  
(Hydraulic Pump 1/4" BSP Hose End)



**729832 A**  
Quick Male Coupling Niple  
(Hydraulic Nut 1/4" BSP End)



MABH 100



MABH 100D



MABH 160



MABH 160D



MBH 160

## ADVANTAGES OF USING THE BGL HYDRAULIC PUMP

- Reduces time and cost during bearing and accessory mounting/dismounting when used with BGL Hydraulic Nuts.
- Safe, fast, and easy to operate for bearing replacement (follow all operating and safety instructions).
- Fast return on investment.
- Lightweight operation with minimal effort.
- Improves maintenance quality.
- Cuts down maintenance time in any application requiring hydraulic pressure.
- Reduces machine downtime.

The greatest benefit occurs during maintenance, especially when removing the bearing-sleeve assembly from the shaft. With a Hydraulic Pump and proper accessories like a Hydraulic Nut and Extension Tube, it's possible to **dismount large assemblies in just minutes — minimizing risks**. In contrast, traditional mechanical methods can take an entire day, depending on the case.

### FOR INSTRUCTIONS, VISIT:

[www.bgl.com.br/en/treinamento.htm](http://www.bgl.com.br/en/treinamento.htm), selecting the guides that show the proper method for mounting and dismounting Hydraulic Sleeves on spherical roller or ball bearings, using oil injection or with Hydraulic Nut.

### HOW TO SPECIFY THE BGL HYDRAULIC PUMP?

By using the following codes:

#### Hydraulic Pumps with Analog Pressure Gauge

BH 100-0.7, BH 160, BH 160-4.8

#### Hydraulic Pumps with Digital Pressure Gauge

BH 100-0.7D, BH 160D, BH 160-4.8D

**BGL**<sup>®</sup>



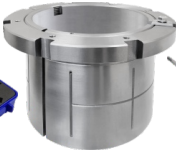
CONTACT YOUR DISTRIBUTOR

2026/02 Release

## HYDRAULIC SOLUTIONS AND TRAINING KIT



Dial Indicator with  
Extensions Rods



Hydraulic  
Adapter Sleeves



Extension  
Tubes



Hydraulic  
Nuts



Feeler  
Gauges



Training  
Kit

## INDUSTRIAL BEARING LINE

### PRODUCTS

- Adapter Sleeves
- Hydraulic Adapter Sleeves
- Withdrawal Sleeves
- Hydraulic Withdrawal Sleeves
- Locking Nuts, Adjustment Nuts, Self-Locking Nuts
- Precision Nuts
- Lock Washers, Locking Devices

### TOOLS

- Hydraulic Pumps
- Hydraulic Nuts
- Dial Indicator with Extensions Rods
- Hook Spanners
- Extension Tubes
- Feeler Gauges
- Training Kit

Contact us for Special Parts!

### GENUINE BGL PARTS

All BGL parts and tools come laser-marked with the BGL logo, part code, and lot number. This ensures traceability, easy identification, and guarantees authenticity as original BGL parts.



Quality • Accuracy • Agility • Tradition • Ethics

# BGL®

Tools for Bearings

Since 1957 • ISO 9001

**BGL - BERTOLOTO & GROTTA LTDA.**

Av. Major José Levy Sobrinho, 1296  
13486-190 • Limeira-SP • Brazil  
+55 19 3451.8210 • +55 19 99155.1332  
info@bgl.com.br • www.bgl.com.br/en

