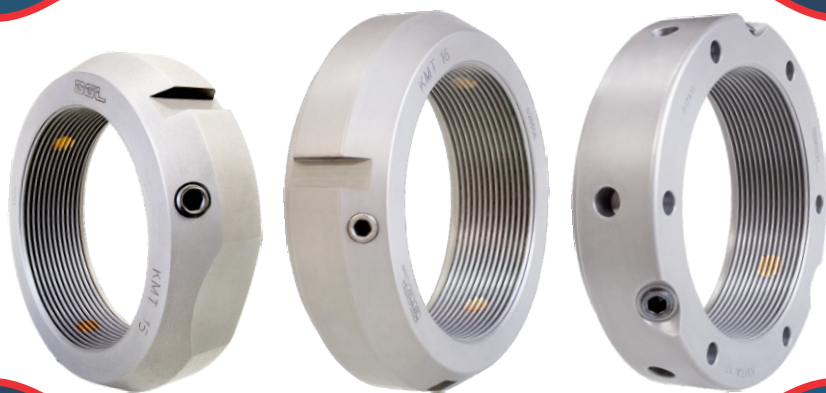


BGL[®]

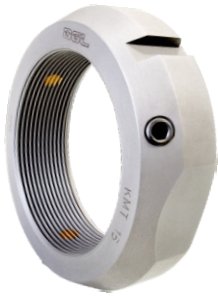
BERTOLOTO & GROTTA

Precision Nut KMT and KMTA

Quality and Precision



MADE IN BRAZIL

**KMT 0 up KMT 15****KMT 16 up 68****KMTA (All)**

BGL Precision Nuts

They are used to locate bearings in machines and equipment that require high precision such as lathes, grinders, milling machines, motors, shut-off valves, spindle and ball screws.

These nuts have 3 (three) brass pins angularly distributed around its circumference which are tightened against the shaft by screws. The pins are machined to match the shaft thread and its tilt is equal to nut thread angle so the nuts are not subject to axial loads or deformation, allowing locking in the exact position. Although they use the same locking system, the KMT and KMTA nuts differ by the external profile and tightening tools required.

Material: Carbon steel

Surface treatment: Phosphate

Optional: Stainless Steel

Assembling

The KMT nuts are usually mounted with hook spanners, however, sizes up KMT 15 can be mounted using wrenches. The KMTA are mounted using pin wrenches or a pin-type face spanner and both of them are equipped with through-body screws. Once assembled, the bolts should be tightened lightly until each brass pin touches the shaft thread and only then tighten the screws alternately with a torque wrench until the recommended torque value is achieved for all the three bolts.

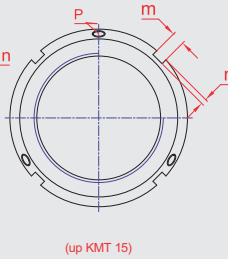
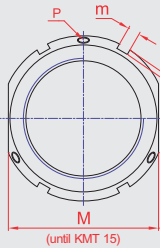
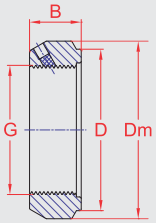
Removal

When removing the precision nuts KMT and KMTA, first loosen the three screws. Note that the brass pins can still be attached to the shaft thread, in order to proceed, tap the nuts near the pins using a copper or rubber hammer to loosen them. Only then remove the nut.

For more information, please visit:

www.bgl.com.br/en/catalogo/enus/porcapre_cod.html

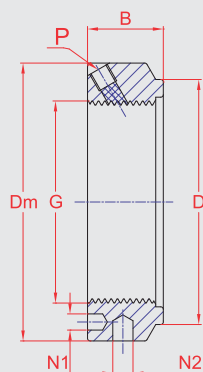
PRECISION NUT KMT



- G Thread
- Dm Outer Diameter
- D Protrusion Diameter
- B Thickness
- m Slot Width
- n Slot Depth
- M Measurement Requirement for Spanner
- P Lock Screw

Part Number	G mm	Dm mm	D mm	B mm	m mm	n mm	M mm	P	Recommended Tightening Torque Nm	Hook Spanner Specification
KMT 0	M 10x0,75	28	23	14	4	2	24	M 5	4.5	HN 3
KMT 1	M 12x1	30	25	14	4	2	27	M 5	4.5	HN 3
KMT 2	M 15x1	33	28	16	4	2	30	M 5	4.5	HN 4
KMT 3	M 17x1	37	33	18	5	2	34	M 6	8	HN 5
KMT 4	M 20x1	40	35	18	5	2	36	M 6	8	HN 5
KMT 5	M 25x1,5	44	39	20	5	2	41	M 6	8	HN 6
KMT 6	M 30x1,5	49	44	20	5	2	46	M 6	8	HN 6
KMT 7	M 35X1,5	54	49	22	5	2	50	M 6	8	HN 7
KMT 8	M 40x1,5	65	59	22	6	2.5	60	M 6	18	HN 9
KMT 9	M 45X1,5	70	64	22	6	2.5	65	M 8	18	HN 10
KMT 10	M 50x1,5	75	68	25	7	3	70	M 8	18	HN 11
KMT 11	M 55x2	85	78	25	7	3	80	M 8	18	HN 13
KMT 12	M 60x2	90	82	26	8	3.5	85	M 8	18	HN 13
KMT 13	M 65x2	95	87	28	8	3.5	90	M 8	18	HN 14
KMT 14	M 70x2	100	92	28	8	3.5	95	M 8	18	HN 15
KMT 15	M 75x2	105	97	32	8	3.5	100	M 10	18	HN 16
KMT 16	M 80x2	110	100	32	8	3.5	-	M 10	18	HN 17
KMT 17	M 85X2	120	110	32	10	4	-	M 10	35	HN 18
KMT 18	M 90x2	125	115	32	10	4	-	M 10	35	HN 19
KMT 19	M 95x2	130	120	32	10	4	-	M 10	35	HN 20
KMT 20	M 100x2	135	125	32	10	4	-	M 10	35	HN 20
KMT 22	M 110x2	145	134	32	10	4	-	M 10	35	HN 22
KMT 24	M 120x2	155	144	32	10	4	-	M 10	35	HN 24
KMT 26	M 130x2	165	154	32	12	5	-	M 10	35	HN 26
KMT 28	M 140x2	175	164	32	14	6	-	M 10	35	HN 27
KMT 30	M 150x2	185	174	32	14	6	-	M 10	35	HN 28
KMT 32	M 160x3	195	184	32	14	6	-	M 10	35	HN 30
KMT 34	M 170x3	205	194	32	14	6	-	M 10	35	HN 31
KMT 36	M 180x3	215	204	32	16	7	-	M 10	35	HN 33
KMT 38	M 190x3	225	214	32	16	7	-	M 10	35	HN 34
KMT 40	M 200x3	235	224	32	18	8	-	M 10	35	HN 36
KMT 44	Tr 220x4	265	254	20	20	10	-	M 10	35	HN 40
KMT 48	Tr 240x4	290	279	20	20	10	-	M 12	60	HN 44
KMT 52	Tr 260x4	310	299	20	20	10	-	M 12	60	-
KMT 56	Tr 280x4	330	319	24	24	12	-	M 12	60	-
KMT 60	Tr 300x4	360	349	24	24	12	-	M 12	60	-
KMT 64	Tr 320x5	390	379	24	24	12	-	M 12	60	-
KMT 68	Tr 340x5	410	399	24	24	12	-	M 12	60	-

PRECISION NUT KMTA



- G** Thread
- Dm** Outer Diameter
- D** Protrusion Diameter
- B** Thickness
- N1** Hole ID for Pin Spanner
- N2** Hole ID for Pin Spanner
- P** Lock Screw

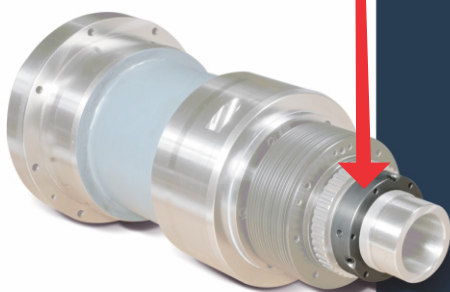
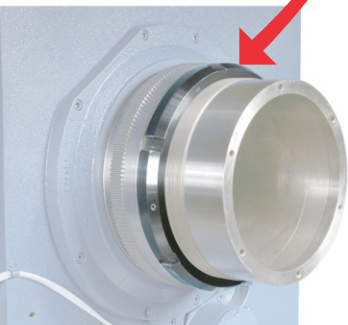
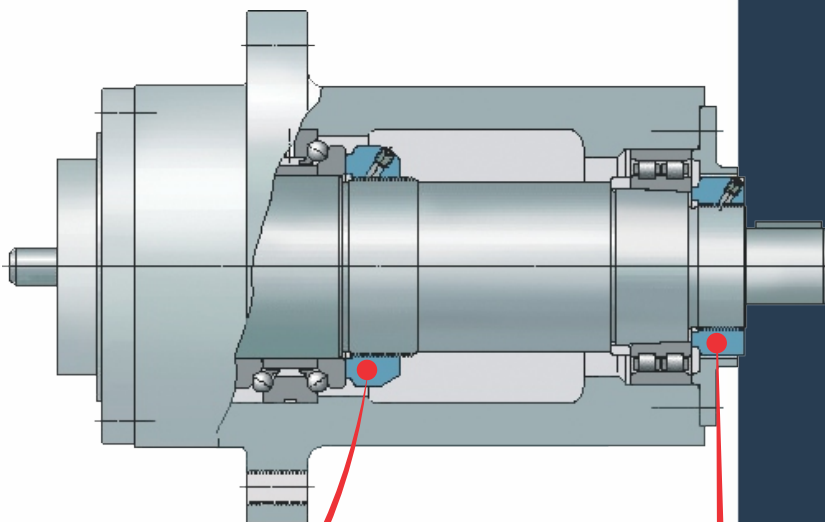
Part Number	G mm	Dm mm	D mm	B mm	N1 mm	N2 mm	P	Recommended Tightening Torque Nm
KMTA 5	M 25x1,5	42	35	20	4.3	4	M 6	8
KMTA 6	M 30x1,5	48	40	20	4.3	5	M 6	8
KMTA 7	M 35x1,5	53	47	20	4.3	5	M 6	8
KMTA 8	M 40x1,5	58	52	22	4.3	5	M 6	8
KMTA 9	M 45x1,5	68	58	22	4.3	6	M 6	8
KMTA 10	M 50x1,5	70	63	24	4.3	6	M 6	8
KMTA 11	M 55x1,5	75	70	24	4.3	6	M 6	8
KMTA 12	M 60x1,5	84	75	24	5.3	6	M 8	18
KMTA 13	M 65x1,5	88	80	25	5.3	8	M 8	18
KMTA 14	M 70x1,5	95	86	26	5.3	8	M 8	18
KMTA 15	M 75x1,5	100	91	26	6.4	8	M 8	18
KMTA 16	M 80x2	110	97	30	6.4	8	M 8	18
KMTA 17	M 85x2	115	102	32	6.4	8	M 10	35
KMTA 18	M 90x2	120	110	32	6.4	8	M 10	35
KMTA 19	M 95x2	125	114	32	6.4	8	M 10	35
KMTA 20	M 100x2	130	120	32	6.4	8	M 10	35
KMTA 22	M 110x2	140	132	32	6.4	8	M 10	35
KMTA 24	M 120x2	155	142	32	6.4	8	M 10	35
KMTA 26	M 130x3	165	156	32	6.4	8	M 10	35
KMTA 28	M 140x3	180	166	32	6.4	10	M 10	35
KMTA 30	M 150x3	190	180	32	6.4	10	M 10	35
KMTA 32	M 160x3	205	190	32	8.4	10	M 10	35
KMTA 34	M 170x3	215	205	32	8.4	10	M 10	35
KMTA 36	M 180x3	230	215	32	8.4	10	M 10	35
KMTA 38	M 190x3	240	225	32	8.4	10	M 10	35
KMTA 40	M 200x3	245	237	32	8.4	10	M 10	35

BGL
BERTOLOTO & GROTTA

www.bgl.com.br/en

BGL PRECISION NUT APPLICATION

SPINDLE



CNC Lathe Shaft

PRECISION NUT KMT / KMTA

For more information, please visit **BGL Electronic Catalog:**
www.bgl.com.br/en/catalogo/enus/

FIND A DISTRIBUTOR NEAR YOU

BGL is a **100% Brazilian company** and **market leader in sleeves for industrial bearings** in South America. The company principles - quality, agility and ethics, enable BGL to be recognized worldwide as a supplier of higher quality and precision parts.

Higher standard quality is what has set BGL apart and an industry leader for over 60 years. Its products have been used by manufacturers of machinery and equipment around the world for decades. As a result of this commitment to quality, BGL is an **ISO 9001** certified company.

BGL Original Parts

All parts and tools carry the BGL trademark, part number and lot number for traceability **laser marked** on one face of the parts (sleeves and nuts).

With this information, any component can be traced back for identification and warranty.



Contact us for any Special Parts

INDUSTRIAL BEARING ACCESSORIES LINE

Adapter Sleeves • Withdrawal Sleeves • Hydraulic Adapter Sleeves • Locknuts
Lock Washers and Locking • Devices Precision Nuts • Hook Spanner
Hydraulic Nuts • Hydraulic Pumps • Extension Tubes

Quality • Accuracy • Agility • Tradition • Ethics

BGL[®]
BERTOLOTO & GROTTA

Sleeves for Bearings

Since 1957 | ISO 9001

BGL - Bertoloto & Grotta Ltda.

Av. Major José Levy Sobrinho, 1296

Zip Code 13486-190 • Limeira-SP • Brazil

+55 19 3451.8210

info@bgl.com.br

www.bgl.com.br/en

